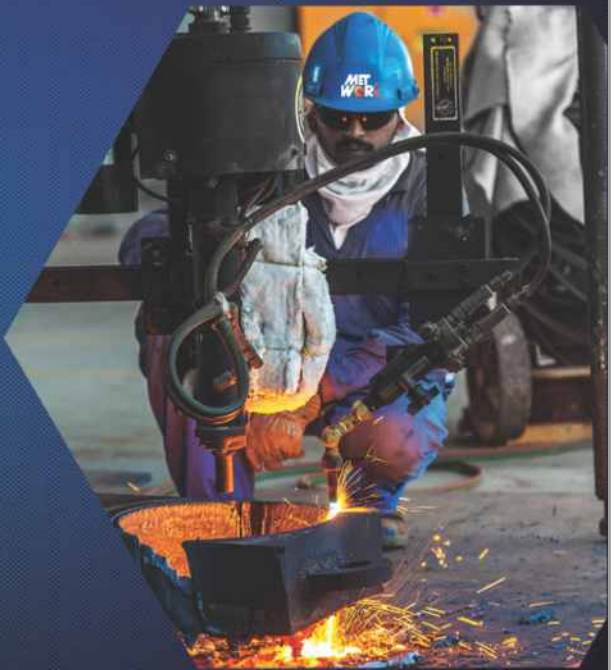
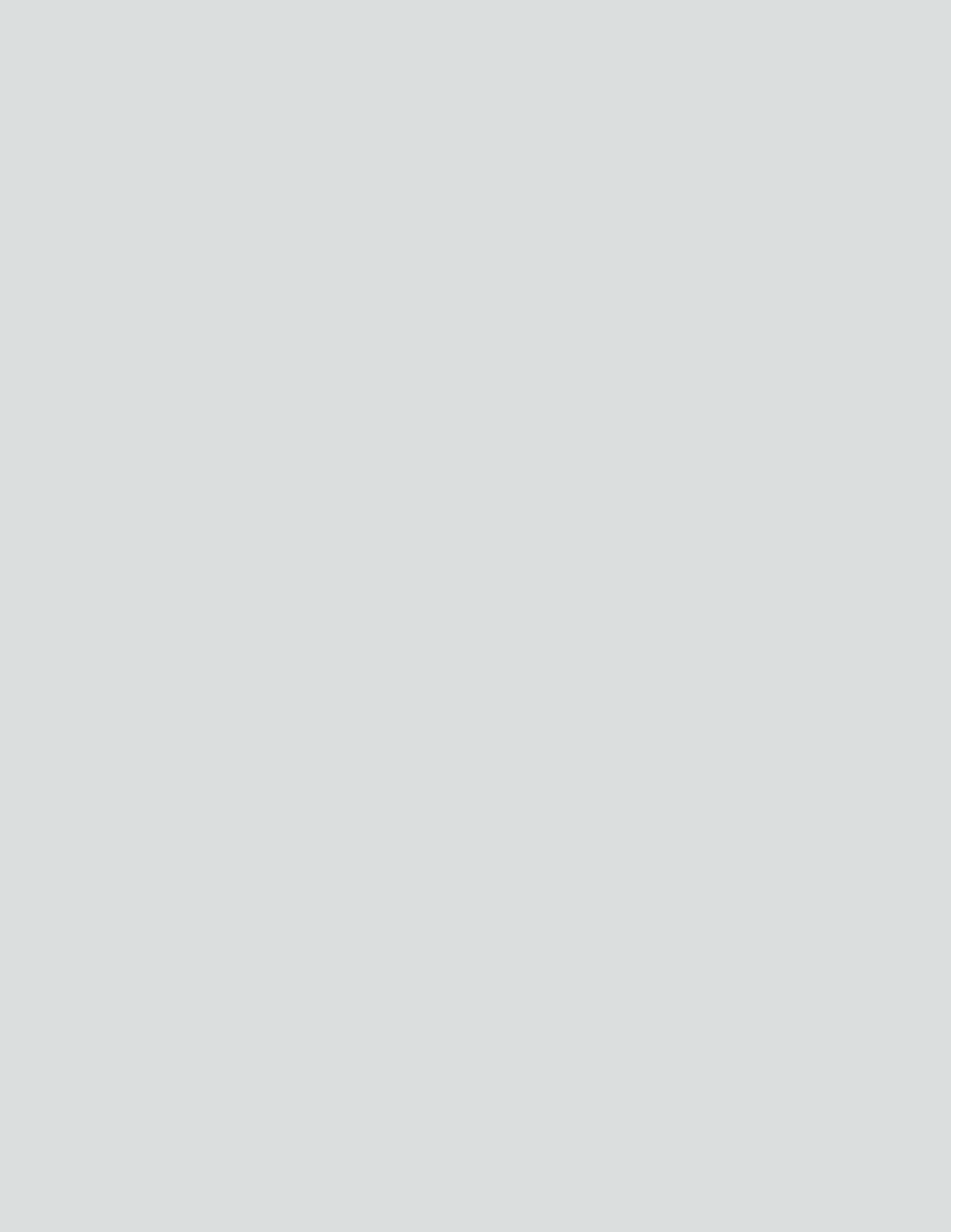




Signature of Reliability in Automotive Industry







Signature of Reliability in Automotive Industry

MET WORK METAL[®]
ENGINEERING WORKS
(PVT) LTD.

Company Highlights



History

COMPANY Established in 1991.

Target industries

Automotive Industries,
Defense Sectors, Oil & Gas,
Lubricants, Petro-Chemicals,
Chemicals & Pharmaceuticals,
Power, Utilities and construction
of steel structure building and parks.

Track Record

More Than 100 Projects /Contracts
executed

Registration & Certifications

- IMS (ISO9001, 14001 & OSHAS 18000) Certifications
- Pakistan Engineering Council (PEC)





Introduction

The company was initially founded in 1978 under name of 'Best Metal Works & Foundry' which was later changed to Metal Engineering Works Pvt Ltd (commonly known as MEW) in year 1990. Since then, the company has evolved as a leading manufacturer of trailers, bowsers, containers, firefighting and special purpose vehicles and field construction such as construction of crude oil storage tanks etc., in Pakistan. MEW is also registered with Pakistan Government, Defense Organizations and with various Multinational Companies such as Shell and TOTAL and has undertaken numerous projects ranging from manufacturing of specialized transport carriers, ground support equipment, aircraft refuellers, specialized vehicles and engineering solutions. The contribution of MEW in the indigenous development of automotive equipment/ components and Defense sectors various types of projects are remarkable and have been well recognized in both civil and defense sectors. The company endeavors to further enhance its capacity through foreign joint ventures and acquisition of modern equipment in order to meet the needs of the growing market for healthy Pakistan.



Signature of Reliability in Automotive Industry

**MET
WORK** **METAL**[®]
ENGINEERING WORKS
(PVT) LTD.

MD Message

I welcome you to the MEW:

Since inception in 1991, Metal Engineering Works Pvt Ltd has undertaken an epic journey in the field of indigenous development and has successfully completed numerous projects for both government and private sector. MEW has always promised and fulfilled the clientele requirements with the highest quality standards of the manufacturing industry. I believe in 3M (Man, Machine & Materials) Quality Principal which has been effectively enforced in MEW for achieving the requisite standards and attaining the required customer satisfaction.

Alhamdulillah, MEW is highly reputed and well acknowledged for its manufacturing standards in both government and civil sectors. This had been only possible due to the shear hard work and high skill levels of the employees working at MEW. I believe in continuous development of human resource and therefore have a comprehensive laid out HR policy for my employees.

I along with the entire team of Metal Engineering Works Pvt Ltd invite you to give us an opportunity to serve you with excellence.

Best wishes
Irfan feroz
Managing Director



Metal engineering works(pvt.) Ltd.



Vision

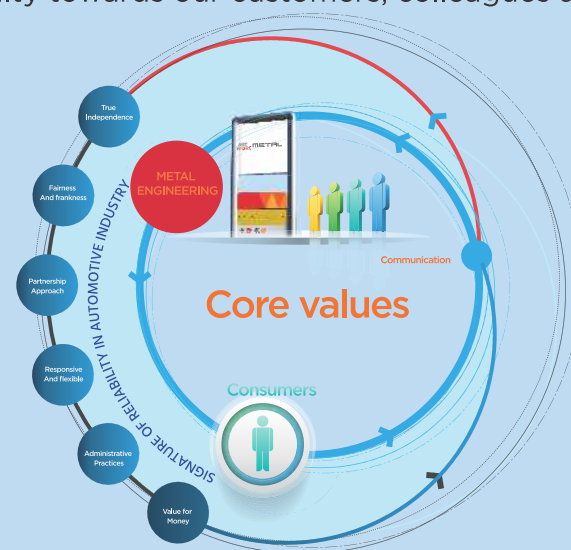
To become the most reliable and innovative manufacturer in automotive and construction industry of the region.

Mission

To supply/provide high-quality products and service to our valuable clients through utilizing modern technologies, engineering innovation, highly skilled employees, dedicated system for continuous improvement, highest business and work ethics keeping in view safety and quality our main moto, thereby leading to added value for our customers and sustained return on investment to our shareholders.improvement, highest business and work ethics, thereby leading to added value for our customers and sustained return on investment to our shareholders.

Core Values

- We don't simply deploy man-power, we undertake projects from its conception to final completion while working in close liaison with our clients in order to fulfill the customer requirements.
- We offer Feasible Engineering Solutions to our clients so as to make the project highly economical and meeting all quality standards.
- We worked together collectively to accomplish our common vision & goals.
- We believe in Long Term Relationships with our clients through providing our services beyond their expectations.
- We Demonstrate Respect for and appropriate loyalty towards our customers, colleagues and suppliers.
- We uphold our commitments towards customers and employees





Signature of Reliability in Automotive Industry

MET WORK METAL[®]
ENGINEERING WORKS
(PVT) LTD.

WORKSHOP FACILITIES

Machine Shop

The machine shop is fully equipped with all types of conventional as well as special purpose machines capable of undertaking every nature of machining job in very close tolerance and high quality surface finish. The key personnel of machine shop are highly experience and have got dependable know how of machining techniques, and can handle sophisticated jobs also.



We have in our machine shop a wide variety of machine tools like Lathes, Capstan Lathes, Vertical Lathes, Boring Machines, Radial Drill Machines, Surface Grinding, Cylindrical Grinding, Centre Less Grinding, Dynamic Balancing, Machine, Shapers, Planers and Copying attachments for Milling and Lathe Machines etc.





Fabrication Shop

It is our pride that we are counted in top five companies of Pakistan who have well established and equipped covered area for fabrication works where we can set a large production line for various specialize jobs such as fuel bowsers, fire and recovery vehicles and steel structures and equipment fabrication works etc., in compliance of all applicable International safety and quality standards without importing know how or technical collaboration from foreign experts/companies.

Our fabrication shop has got all the necessary facilities of sheet metal work including overhead cranes upto 15ton capacity, heavy duty shears, presses, benders, welding transformers, submerged arc welding machines, TIG and MIG welding machines etc.

We also have special purpose jigs are fixtures such as rotary welding fixture, rotators, idlers and jacking system for production with quality works of Trailers, Bowsers and LPG vessels etc.



Forging and Lashing Facilities

Metal Engineering (Pvt.) Ltd. plays a very important role for providing the specialized products to defense and as well as civil and private sectors pertaining to their needs of heavy duty customized forging parts, rigging, lashing and tie members which are being used in auto parts, construction machinery and in some customized needs of the requirement.

Our set up is equipped with furnaces and forging hammers in order to produce forging parts as per customization of the client.

Following are major products:

- 1. Lashing Chains**
- 2. Axle**
- 3. King Pins**
- 4. Motor cycle's hubs**
- 5. Specialized Nozzles for SUPARCO etc.**

Product	Specifications	Usage
Lashing Chain Large	Φ30mm x 2.5meter, Breaking Load 90KN	Lashing of Tank Transporter
Lashing Chain Small	Φ25mm x 2.5meter, Breaking Load 900KN	Lashing of APC and other Carriers
D-Shackle Large	Φ30mm, WLL 9.5tons	Lashing of Tank Transporter, APC and other Carriers
D-Shackle Small	Φ19mm, WLL 3.25tons	Lashing of Tank Transporter, APC and other Carriers
Turn Buckle	M36	Lashing of Tank Transporter, APC and other Carriers
Master Link	2T	Lifting Purpose
Master Link	3T	Lifting Purpose
Hook	2T	Lifting Purpose
Anchor Chain	30mm x 500mm, 52 Tons	Marine Application





Design Centre

In the engineering industry design Centre plays a very vital role for the industry. Therefore the design Centre office should have experienced and qualified design engineers for the purpose. MEW has highly qualified and experienced team of engineers and professionals for this department. As per present requirement CAD/CAM package of computers such as AutoCAD & Cero are available which includes latest hardware and software programmers. We also use in house expertise to prepare customized software/ programs to resolve problems related to design and operational activities. Design simulation is also available with our sister concern for this purpose.



Research & Development

Research & Development is one of the most important aspects of our organization. This department first checks the possibility and availability of drawings, specifications and availability of materials prior to commencement of the job. This section is not only responsible for resolving engineering problems but also plans and executes production development work to facilitate product manufacturing. It is supervised by highly skilled and experienced engineers who possess vast knowledge of engineering design and technical advancements.





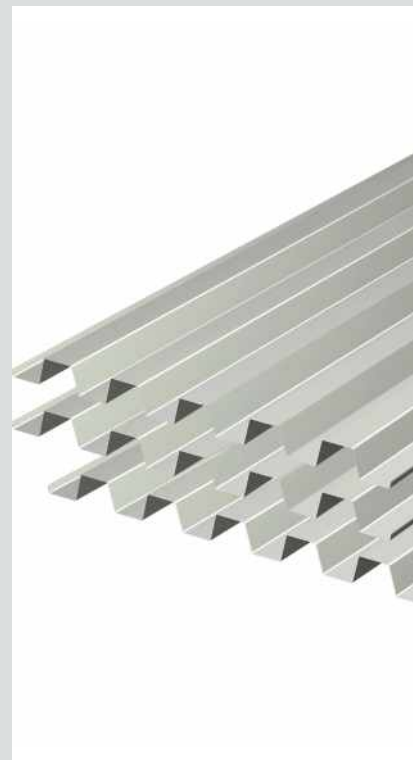
Signature of Reliability in **Automotive Industry**

MET WORK METAL[®]
ENGINEERING WORKS
(PVT) LTD.

Metal Sheet Section

Metal engineering works has the distinction to maintain a full-fledged sheet metal workshop, equipped different types & capacities of presses and other related facilities. This unit is very important for proper execution of any engineering plant on turn-key basis. This unit caters for the manufacture of jigs, fixtures, gratings, and accessories for pipe work, fasteners and similar items. All parts from 1mm to 5mm for pressing, bending & to obtain typical shape can easily & economically be produced to desired shape & finish. This type of facilities are generally not available with big / heavy engineering units usually they are dependent on the small roadside workshops & thus such units always lag behind the completion schedule.

Metal engineering work having modern & updated sheet metal workshop can be relied/ trusted by our customers for timely/ schedule execution of all types of engineering products, within our activities. Vehicle registration plate is one of the item which has been developed in this shop for the provincial as well as central govt. We also have the capacity to manufacture road signs, traffic signs, electric poles, caution signs etc.





Production Planning & Control

Metal Engineering Works (Pvt.) Ltd., firms believe on planning and scheduling of every project through deployment of Planning Engineers. This effective PPC helps us in advance for arrangement of Resource requirements and control of cost in every stage.

Our team is well trained and equipped with latest tools of Planning and Scheduling such as Primavera and Microsoft Project.





Signature of Reliability in Automotive Industry

MET WORK METAL[®]
ENGINEERING WORKS
(PVT) LTD.

Core Products



Command & Control Trailer



Command & Control Trailer (Inside view)



60 Ton Semi Trailer



Mechanical Mine Layer



Fuel Bowser



Air Craft Refueller



Core Products



Assault Trackway (CL-30, CL-60)



8000bbls-Tanks



Auxiliary Power Unit (A.P.U.)



Crude Oil Storage Tank



Car Carrier



Mobile Lab



Signature of Reliability in Automotive Industry

MET WORK METAL[®]
ENGINEERING WORKS
(PVT) LTD.

Core Products



Air Pollution Van



Domestic Fire Tender



Low Bed Trailer



Mobile Workshop



Tender Water Fire Crash



Dump Trailer



Department of Quality Assurance



The pursuit of excellence and quality remains the top most priority of the management. To maintain international quality standards, comprehensive checks and inspections are carried out at every stage of manufacturing and for this purpose ITPs (Inspection and Test Plan) are prepared and approved by the concerned authorities prior to start of production process.



MEW Testing facilities include all types of measuring and inspection tools (calibrated) which enable the professionally trained and qualified staff to check and maintain standards consistently and effectively. Each and every stage inspections are documented as per approved ITPs. The activities of quality assurance are distributed over following areas:



Department of Health and Safety

MEW is eager to provide, maintain and improve safe and healthy conditions at each of its workstation and construction site. MEW has comprehensive HSE policy for its employee. MEW wants to serve our clients, industry and society in such a manner as to prevent personal injury, prevent lose and damage and maintain the safe working environment. MEW has prepared safety plan and procedure in compliance of OSHAS 18001 and ISO 14001 and furthermore also has the trained and qualified team to look after the aspect of HSE.





Signature of Reliability in Automotive Industry

MET WORK METAL[®]
ENGINEERING WORKS
(PVT) LTD.

Codes Experience & Conformance to International Standards

API 650

ASME II

ASME V

ASME VIII

ASME IX

ANSI

ASTM

AISI

NATO

AWS

NFPA 385

NFPA 407

NFPA 77

NFPA 1901

ISO

ADR

OSHAS

DOT



Major Clients



DGMP



MVRDE



**PAKISTAN
AIR FORCE**



GHQ



National Logistics Cell



FWO



SHAHEEN AIRPORT SERVICES

**SHAHEEN
AIRPORT SERVICES**



پاکستان سول ایوی ایشن اتھارٹی



Shell



TOTAL



PPL



CALTEX



OGDCL



SNGPL



RESCUE 1122



AL GHAZI TRACTOR



Registration & Certifications

- IMS (ISO9001, 14001 & OSHAS 18000) Certifications
- Pakistan Engineering Council (PEC)





Metal Engineering Works (Pvt) Ltd.

■ S-4, S.I.T.E., Karachi, Pakistan
☎ +92 21 32567900, 32561122-3,
☎ +92 21 32561565, 32563338
✉ info@metwork.com.pk
🌐 www.metwork.com.pk

**MET
WORK METAL[®]**
ENGINEERING WORKS
(PVT) LTD.